



PSM TRADE
—INDIA—



Welcome To

PSM Trade India

Investment In possibilities

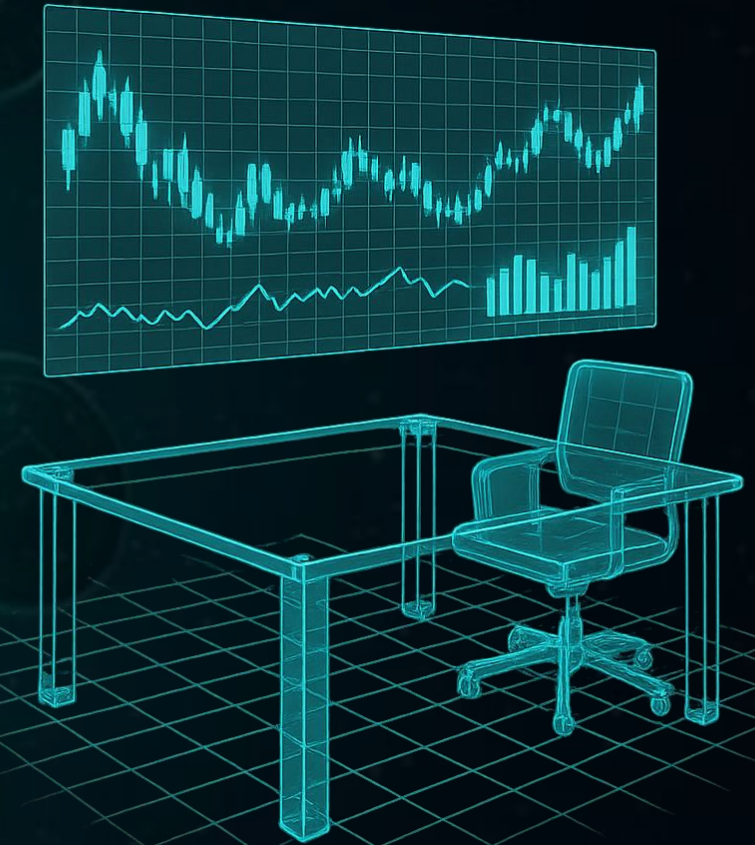
PSM TRADE
—INDIA—



www.psmtradeindia.com

Introduction

PSM Trade India is a dynamic trading company committed to delivering excellence across domestic and international markets. Specializing in the sourcing and distribution of high-quality commodities, industrial goods, and consumer products, PSM Trade India combines strategic insight with operational agility. With a robust network of suppliers and clients, the company ensures timely delivery, competitive pricing, and uncompromising quality. Headquartered in India, PSM Trade India leverages deep market knowledge and ethical business practices to build long-term partnerships. Whether navigating global supply chains or meeting local demands, the company stands as a trusted bridge between producers and consumers. Driven by innovation and integrity, PSM Trade India is shaping the future of trade with reliability and professionalism.



Mission

PSM Trade India's mission is to strengthen global and domestic trade by delivering superior products, efficient logistics, and transparent partnerships. We are dedicated to ethical practices, customer satisfaction, and continuous innovation, ensuring value creation in every transaction. By leveraging strong supplier networks and market expertise, we aim to empower businesses, foster long-term growth, and contribute to India's economic progress while building trust and reliability across industries and borders.



Vision

PSM Trade India envisions becoming India's most trusted and agile trading company, recognized for excellence, innovation, and sustainable practices. Our vision is to expand global reach while supporting local industries, creating prosperity through trade that bridges producers and consumers. We aspire to set benchmarks in service quality, integrity, and adaptability, shaping a future where commerce drives inclusive growth, technological advancement, and enduring partnerships across diverse sectors and international markets.



What is Cryptocurrency ?

Cryptocurrency is a digital or virtual form of money that uses blockchain technology to keep transactions secure and transparent. Unlike regular money issued by governments, cryptocurrencies are decentralized, meaning no bank or authority controls them. People can send or receive crypto online anywhere in the world, often with low fees and fast processing. Popular cryptocurrencies include Bitcoin, Ethereum, and Litecoin. Crypto can be used for buying goods, investing, trading, or transferring money. Every transaction is recorded on a public ledger called the blockchain, which helps prevent fraud. However, cryptocurrency prices can be very unstable, so investing in them carries financial risk.



What is Crypto Trading ?

Cryptocurrency trading is the process of buying and selling digital currencies like Bitcoin, Ethereum, or others to make a profit. Traders use online platforms called crypto exchanges to trade these assets. The goal is to buy crypto at a low price and sell it at a higher price, similar to stock trading. Crypto markets operate 24/7, and prices can change very quickly, making trading both exciting and risky. Traders often study charts, market trends, and news to predict price movements. There are different styles of trading, such as day trading, swing trading, and long-term holding. While the potential profits can be high, crypto trading also carries significant risk due to strong price fluctuations.



Our Package's

1

RS.1000

2

Rs.2500

3

Rs.5000

4

Rs.10,000

5

Rs.15,000

6

RS. 25,000

7

Rs.50,000

8

Rs.1,00,000

9

Rs.4,00,000

10

Rs.8,00,000

Types of Income

Direct Income

Daily ROI Income

Booster Income

Daily Level Income

Daily Salary Income

Reward Income



Direct Income

10%

**Get 10% income on
Each direct referral**



2) Direct income
Get 10% income on Each direct referral

Daily ROI Income

Packages	Daily ROI	Income up to Days
1000	4%	Rs.40 for 90 Days
2500	4%	Rs.100 for 90 Days
5000	4%	Rs.200 for 90 Days
10,000	5%	Rs.500 for 90 Days
15,000	5%	Rs.750 for 90 Days
25,000	5%	Rs.1250 for 90 Days
50,000	6%	Rs.3000 for 90 Days
1 Lac	6%	Rs.6000 for 90 Days
2 Lac	6.5%	Rs.13000 for 90 Days
4 Lac	6.5%	Rs.26000 for 90 Days
8 Lac	6.5%	Rs.52000 for 90 Days



Booster Income

Complete 3 Direct
Same or Above
packages within 10
days of activation.

Get 1% Extra on your
Package



Daily Level Income

(for 90 days)

Level	Income	Level	Income
Level 1	20%	Level 12	2%
Level 2	8%	Level 13	1%
Level 3	5%	Level 14	1%
Level 4	5%	Level 15	1%
Level 5	4%	Level 16	1%
Level 6	3%	Level 17	1%
Level 7	3%	Level 18	1%
Level 8	2%	Level 19	1%
Level 9	2%	Level 20	1%
Level 10	2%	Level 21	1%
Level 11	2%		

❖ Daily level income will be calculated on daily ROI Income not on Investment amount.

www.psmtradeindia.com



Daily Salary Income

Direct Business	Team Business	Daily Salary
10,000	1 lac	Rs.100 for 90 days
15,000	2 lac	Rs.250 for 90 days
25,000	5 lac	Rs.600 for 90 days
25,000	10 lac	Rs.1500 for 90 days



Reward Income

Team	Reward
20 Team	Rs.800 reward
50 Team	Rs.2000 reward
100 Team	Rs.4000 reward
250 Team	Rs.10,000 reward
500 Team	Rs.22,000 reward
1000 Team	Rs.50,000 reward
3000 Team	Rs.1 lac reward



Terms & Conditions

Minimum Withdrawal Rs.100

Daily Withdrawal Monday to Sunday

**Re-top up compulsory after 5X working +
Non- working**

Withdrawal timings 9:00am to 12:00pm

Withdrawal Charges 10% deduction

One mobile one email 3 ids only





Thank you

For Visiting
For More Information Contact Us

www.psmtradeindia.com

